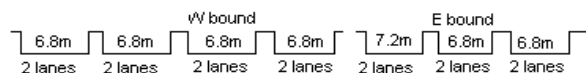
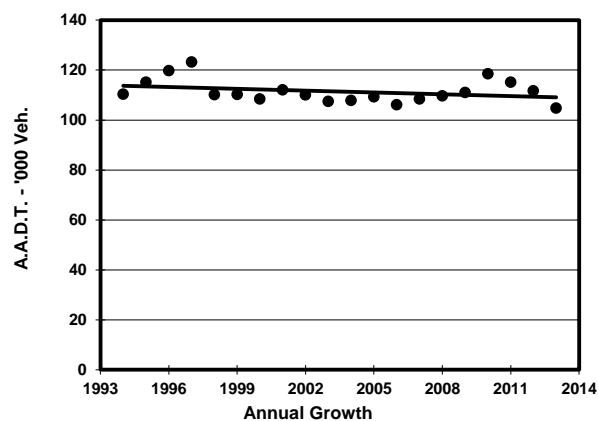
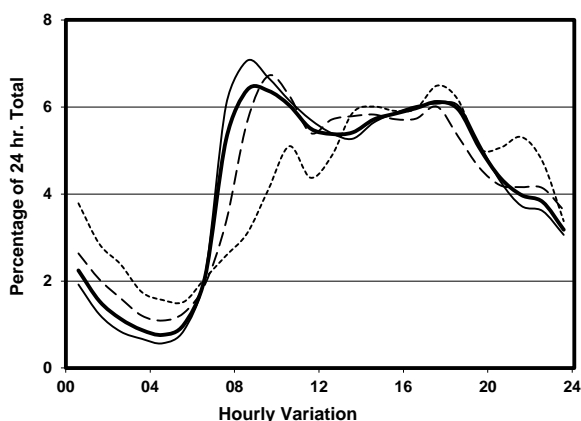
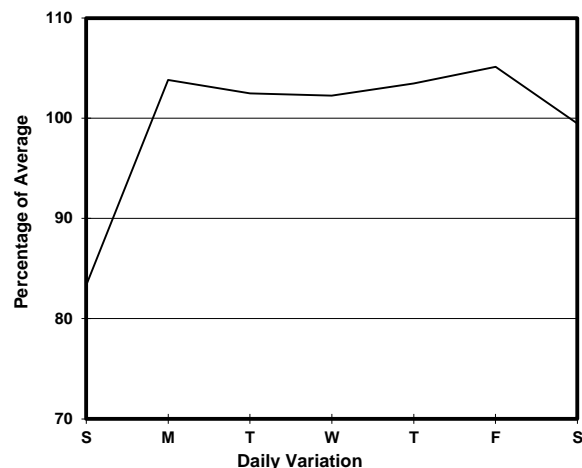
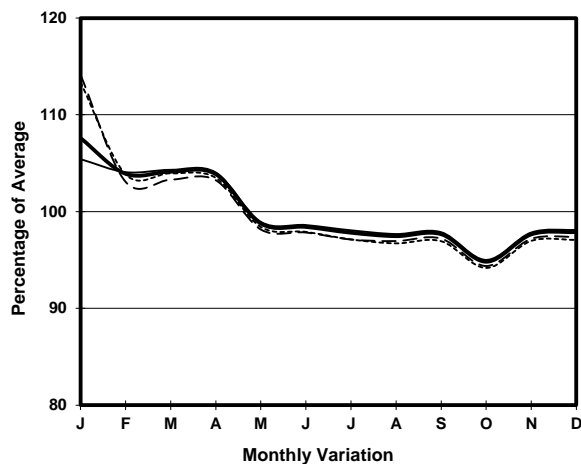


YEAR 2013
CORE STATION 1003
ROAD NETWORK MAJOR
ROAD TYPE EXPRESSWAY

LINK ISLAND EASTERN CORRIDOR (from HEALTHY ST INT
EASTERN END to TAIKOO SHING INT WESTERN END)



1. TRAFFIC FLOW VARIATION AND GROWTH



2. TRAFFIC CHARACTERISTICS (BY DIRECTION)

Parameter	All - Day	Mon. - Fri.	Sat.	Sun.
EAST BOUND				
A.A.D.T.	48000	49420	50640	41370
R 12 / 24 - %	65.9	67.5	63.4	59.4
R 16 / 24 - %	85.8	87.3	82.8	80.9
AM Peak Hour	0900-1000	0900-1000	0900-1000	0900-1000
One-way flow at AM peak hour	2970	3300	2750	1730
T - % (AM)	-	-	-	-
PM Peak Hour	1600-1700	1600-1700	1700-1800	1700-1800
One-way flow at PM peak hour	2860	2950	3020	2490
T - % (PM)	-	-	-	-
Prop.of commercial vehicles - 16 hr.	-	-	-	-
WEST BOUND				
A.A.D.T.	56760	59920	54440	46860
R 12 / 24 - %	73.4	75.6	71.4	61.5
R 16 / 24 - %	88.3	89.9	86.3	80.6
AM Peak Hour	0800-0900	0800-0900	0900-1000	0900-1000
One-way flow at AM peak hour	4070	4690	4310	1890
T - % (AM)	-	-	-	-
PM Peak Hour	1700-1800	1700-1800	1700-1800	1700-1800
One-way flow at PM peak hour	3620	3800	3290	3240
T - % (PM)	-	-	-	-
Prop.of commercial vehicles - 16 hr.	-	-	-	-

3. OTHER INFORMATION AND COMMENT